

0672/1  
Così fan tutte.

So machen's Alle.  
Oper in 2 Akten.

TEATRO COMUNALE  
BOLOGNA  
INV. N. 651



Flauto I.

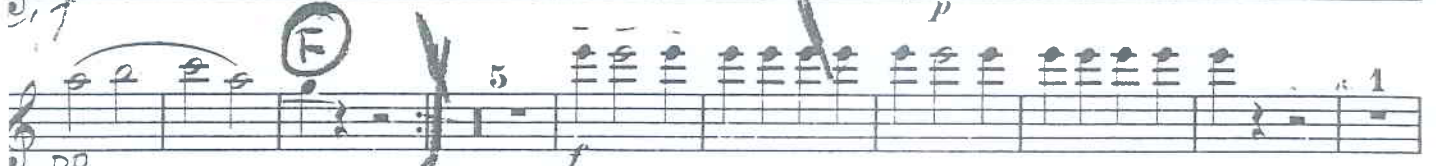
Ouverture.

W. A. Mozart. Werk 588.

Andante.



Presto.



Flauto I.

The musical score for Flauto I on page 2 contains the following elements:

- Staff 1:** Starts with a forte (*f*) dynamic. Includes a circled handwritten annotation 'H' above the staff.
- Staff 2:** Features a 'Solo.' marking and a piano (*p*) dynamic. Includes a circled handwritten annotation 'I' above the staff.
- Staff 3:** Continues the melodic line with slurs and accents.
- Staff 4:** Starts with a pianissimo (*pp*) dynamic. Includes a circled handwritten annotation 'K' above the staff.
- Staff 5:** Features a circled handwritten annotation 'K1' above the staff.
- Staff 6:** Starts with a 'Solo.' marking and a piano (*p*) dynamic. Includes a circled handwritten annotation 'L' above the staff.
- Staff 7:** Continues the melodic line with slurs and accents.
- Staff 8:** Includes a circled handwritten annotation 'M' above the staff.
- Staff 9:** Features a circled handwritten annotation 'N' above the staff, with a sequence of notes numbered 1 through 7.
- Staff 10:** Starts with a fortissimo (*ff*) dynamic.

Dynamics throughout the score include *f*, *pp*, *p*, *f*, and *ff*. The score also includes various musical notations such as slurs, accents, and articulation marks.